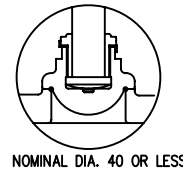
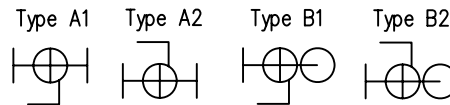
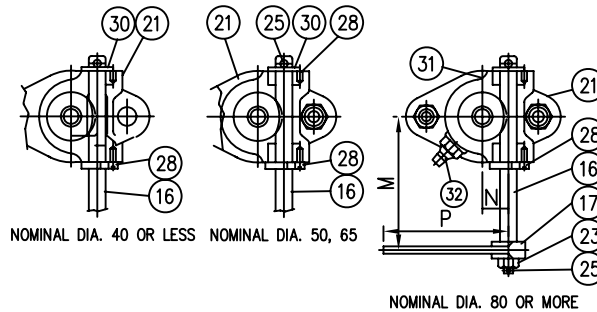
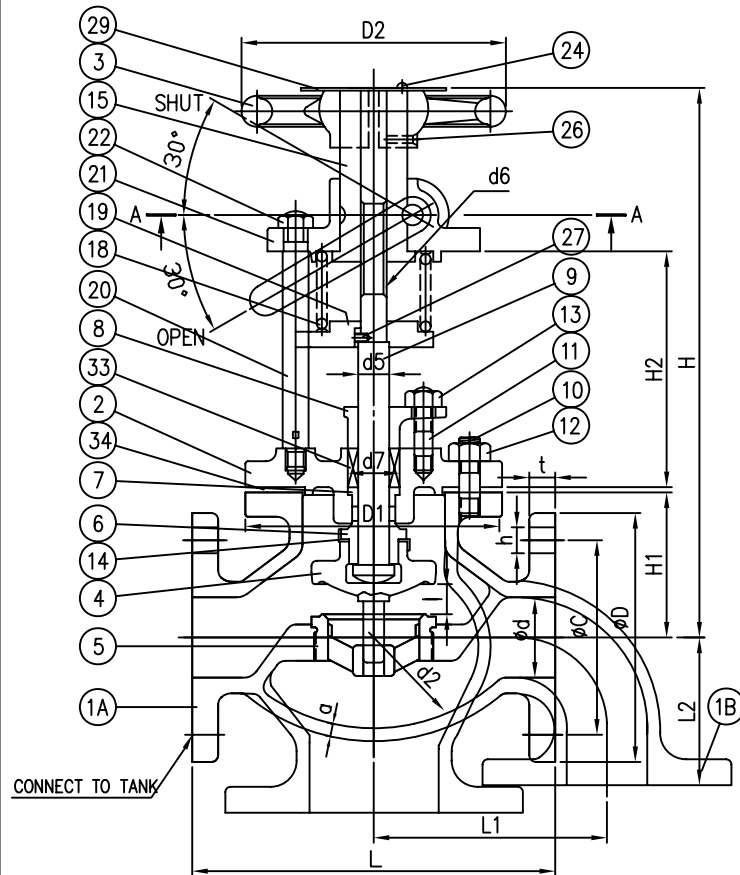


■ PRESSURE RATING ■

| | |
|--|-----------|
| MAXIMUM WORKING PRESSURE MPa (kgf/cm ²) | 0.098 [1] |
|--|-----------|

■ HYDRAULIC INSPECTION ■

| | | |
|---|------|-----------|
| TEST PRESSURE MPa (kgf/cm ²) | BODY | 0.686 [7] |
| | SEAT | 0.196 [2] |



Bolt holes of flanges shall straddle body center lines.

(Unit: mm)

| Nominal dia. | Flange | | | | | | | | | | | Lift | Handwheel D2 | Body | | | | Stem | | Shifting box | WEIGHT (kg) | | | | | |
|--------------|--------|-----|-----|-----|-----|-----------------|----|----------------------|-----|-------------------------------|-----|------|-----------------|------|-----|-----|----|------|----|--------------|----------------|-------|------|-----|-------|-------|
| | d | L | L1 | L2 | D | Bolt hole | | Nominal dia. of bolt | t | H (approx.) (fully opened) | H2 | | | D1 | d2 | a | H1 | d5 | d6 | | d7 | M | N | P | A1,A2 | B1,B2 |
| | | | | | | P.C dia C | No | | | | | | | | | | | | | | | | | | | |
| 25 | 25 | 130 | 80 | 65 | 125 | 90 | 4 | 19 | M16 | 14 | 265 | 122 | 8 | 120 | 90 | 55 | 4 | 70 | 18 | TW12 | 28 | 70 | 13 | 100 | 8.5 | 8.8 |
| 40 | 40 | 170 | 85 | 80 | 140 | 105 | 4 | 19 | M16 | 16 | 310 | 147 | 17 | 140 | 120 | 82 | 5 | 80 | 20 | TW14 | 32 | 92.5 | 18 | 110 | 12.7 | 13.0 |
| 50 | 50 | 220 | 125 | 90 | 155 | 120 | 4 | 19 | M16 | 16 | 335 | 143 | 17 | 160 | 155 | 110 | 8 | 90 | 20 | TW16 | 32 | 99 | 21 | 110 | 20.9 | 21.8 |
| 65 | 65 | 270 | 155 | 100 | 175 | 140 | 4 | 19 | M16 | 18 | 395 | 181 | 22 | 180 | 175 | 135 | 9 | 100 | 22 | TW16 | 36 | 124.5 | 23 | 120 | 30.5 | 32.1 |
| 80 | 80 | 300 | 165 | 120 | 185 | 150 | 8 | 19 | M16 | 18 | 420 | 191 | 27 | 180 | 190 | 160 | 9 | 105 | 22 | TW18 | 36 | 131.5 | 25 | 160 | 35.4 | 37.5 |
| 100 | 100 | 350 | 200 | 130 | 210 | 175 | 8 | 19 | M16 | 18 | 510 | 248 | 33 | 224 | 215 | 195 | 11 | 125 | 26 | TW22 | 42 | 151.5 | 28.5 | 190 | 55.6 | 59.2 |

| | | | | |
|----|-----------------------|--------------|---------|------|
| 34 | GASKET | NON ASBESTOS | 1 | |
| 33 | PACKING | NON ASBESTOS | 1SET | |
| 32 | GREASE NIPPLE | - | C3771BD | 1 |
| 31 | BUSH | | C3771BD | 1 |
| 30 | WASHER | SS400 | | 1 |
| 29 | NAME PLATE | C2801P | | 1 |
| 28 | SET SCREW | SS400 | | 2 |
| 27 | LOCK PIN | SS400 | | 1 |
| 26 | CROSS HEAD SCREW | C2700W | | 1 |
| 25 | SPLIT PIN | SWRM10 | | 1 |
| 24 | CROSS HEAD SCREW | C2700W | | 1 |
| 23 | HEXAGON NUT | SS400 | | 1 |
| 22 | HEXAGON NUT | SS400 | | 2 |
| 21 | SUPPORT BUSH FOR STEM | BC6 | SC480 | 1 |
| 20 | STAY | SS400 | | 2 |
| 19 | SPRING SUPPORT | SS400 | | 1 |
| 18 | SPRING | SWP-A | SUP4 | 1 |
| 17 | LEVER | SS400 | | 1 |
| 16 | OPERATING SPINDLE | SUS403 | | 1 |
| 15 | BUSH FOR STEM LIFT | | C3771BD | 1 |
| 14 | DISC LOCK WASHER | C2600P | SUS304 | 1 |
| 13 | HEXAGON NUT | | C3771BD | 2 |
| 12 | HEXAGON NUT | SS400 | | 1SET |
| 11 | STUD BOLT | SS400 | | 2 |
| 10 | STUD BOLT | SS400 | | 1SET |
| 9 | STEM | C3771BD | SUS403 | 1 |
| 8 | PACKING GLAND | BC6 | | 1 |
| 7 | PACKING BUSH | - | BC6 | 1 |
| 6 | DISC NUT | C3771BD | SCS2 | 1 |
| 5 | SEAT RING | - | SCS2 | 1 |
| 4 | DISC | BC6 | | 1 |
| 3 | HANDWHEEL | | FC200 | 1 |
| 2 | BONNET | BC6 | SC480 | 1 |
| 1B | BODY (B-TYPE) | BC6 | SC480 | 1 |
| 1A | BODY (A-TYPE) | BC6 | SC480 | 1 |

| NO. | NAME OF PART | MATERIAL | | | Q'TY | REMARK |
|-----|--------------|------------------------|--------------------------|---------------------------|-------|--------|
| | | NOMINAL DIA 40 LESS | NOMINAL DIA 50 AND 65 | NOMINAL DIA 80 OR MORE | | |
| REV | DATE | DESCRIPTION OF REASON | DRAW'G | CHK'D | APP'D | |

| | | | | | |
|-------------|--|---------|----------------|-----------|---|
| DESCRIPTION | JIS F7399 CAST BRONZE OIL TANK 10kgf/cm ² EMERGENCY SHUT-OFF VALVES | | | | |
| DRAW'G | CHK'D | APP'D | SCALE | NON | |
| H.J.YUN | S.M.BAB | S.M.BAB | UNIT | (mm) inch | |
| | | | PROJECT | | |
| DATE | 06.11.16 | DWG NO. | KS-BC-ES0-2-A1 | REV | 0 |

技星金屬株式會社
KEY SUNG METAL CO., LTD.