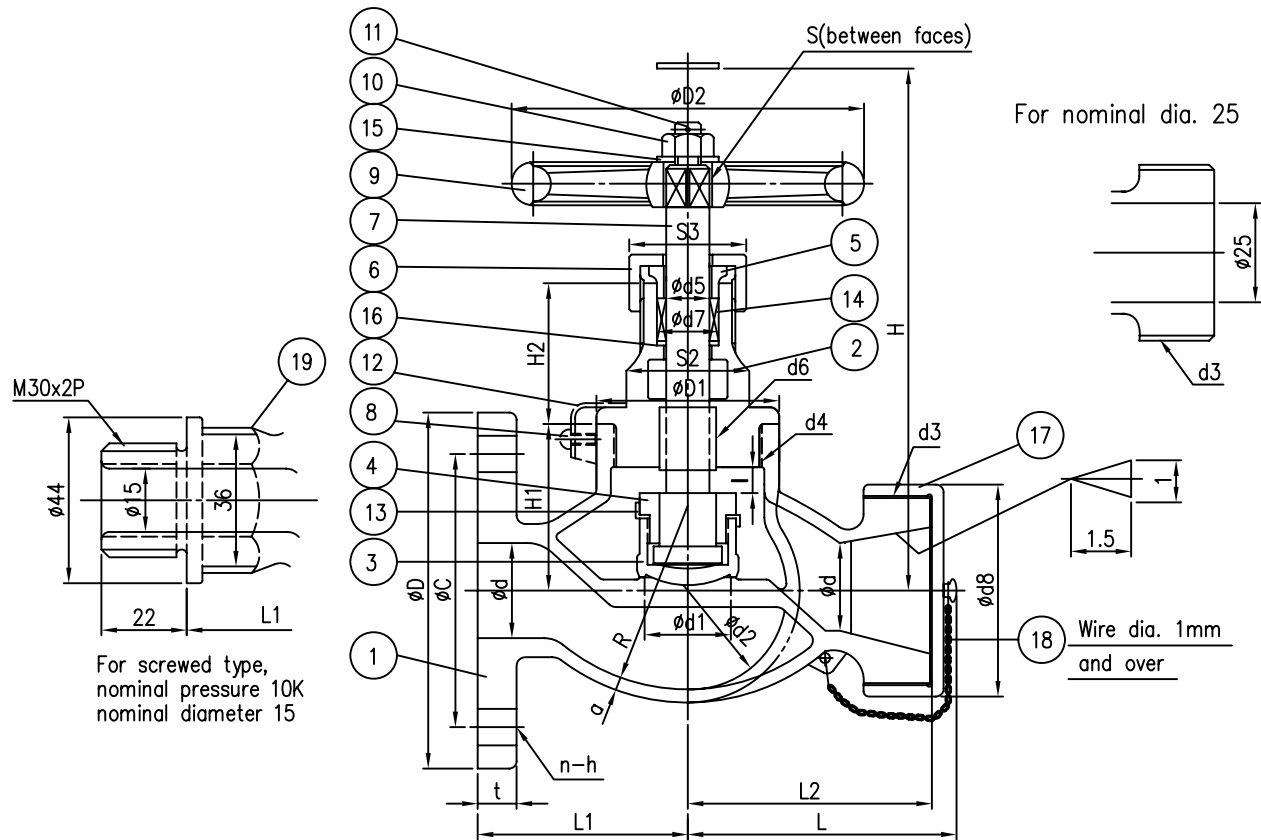


■ HYDRAULIC INSPECTION ■

■ PRESSURE RATING ■

TEST PRESSURE MPa(kgf/cm <sup>2</sup> )	BODY	5K	1.03	[10.5]
		10K	2.06	[ 21 ]
	SEAT	5K	0.75	[ 7.7 ]
		10K	1.51	[15.4]
BASE CONNECTION	5K	0.69	[ 7 ]	
	10K	1.37	[ 14 ]	

FLUID CONDITION	MAX. WORKING PRESSURE MPa (kgf/cm <sup>2</sup> ) <sup>2</sup>			
	5K		10K	
	15A	25A	15A	25A
STEAM OF 205°C OR LESS				
AIR	0.49[5]	0.49[5]	0.981[10]	0.981[10]
PULSATION WATER				
NON-SHOCK WATER OF 120°C OR LESS	0.69 [7]		1.37 [14]	



Bolt holes of flanges shall straddle body center lines.

19	BODY	BC6	1
18	CHAIN	C2600W	1
17	CAP	BC6	1
16	BONNET BUSH	C3771BD	1
15	NAME PLATE	C2801P	1
14	PACKING	NON-ASBESTOS	1set
13	DISC LOCK WASHER	C2600P	1
12	BONNET LOCK PLATE	C2600P	1
11	SPLIT PIN	C2600W	1
10	HEXAGON NUT	C3604BD	1
9	HANDWHEEL	FC200	1
8	SET SCREW	C2700W	2
7	STEM	C3771BD	1
6	GLAND NUT	C3771BD	1
5	PACKING GLAND	C3771BD	1
4	DISC NUT	C3771BD	1
3	DISC	BC6	1
2	BONNET	BC6	1
1	BODY	BC6	1

NO.	NAME OF PART	MATERIAL	Q'TY	REMARK	
REV	DATE	DESCRIPTION OF REASON	DRAW'G	CHK'D	APP'D

DESCRIPTION	JIS F7334 CAST BRONZE 5,10kgf/cm <sup>2</sup> HOSE GLOBE VALVES			
DRAW'G	CHK'D	APP'D	SCALE	NON
H.J.YUN	S.M.BAB	S.M.BAB	UNIT	(mm) inch
DATE	06.11.16	DWG NO.	KS-BC-HOGL-7-A1	REV 0

Nominal dia.	Nominal pressure	Flange										Body										Bonnet		Stem		Between faces	WEIGHT (kg)					
		K	d	d1	L	D	Bolt holes			Nominal dia. of bolt	t	Ht.(opened) (approx)	H	I	D2	d2	Threads				d4	d8	D1	H2	d5			d6	S	d7	S2	S3
							P.C dia C	No	h								M	a	R	H1												
15	5	15	20	73	80	60	4	12	M10	9	130	5	80	40	M42x2	3	40	47	50	60	M36x2	52	45	33	10	TW14	8	17	32	32	2.51	
	10	15	20	73	95	70	4	15	M12	12	130	5	80	40	M42x2	4	40	47	55	60	M36x2	52	45	33	10	TW14	8	17	32	32	2.76	
25	5	25	30	78	95	75	4	12	M10	10	160	8	125	55	M42x2	4	55	59	60	65	M42x2	52	52	43	13	TW18	10	21	36	36	3.55	
	10	25	30	83	125	90	4	19	M16	14	160	8	125	55	M42x2	4	55	59	65	70	M42x2	52	52	43	13	TW18	10	21	36	36	4.15	

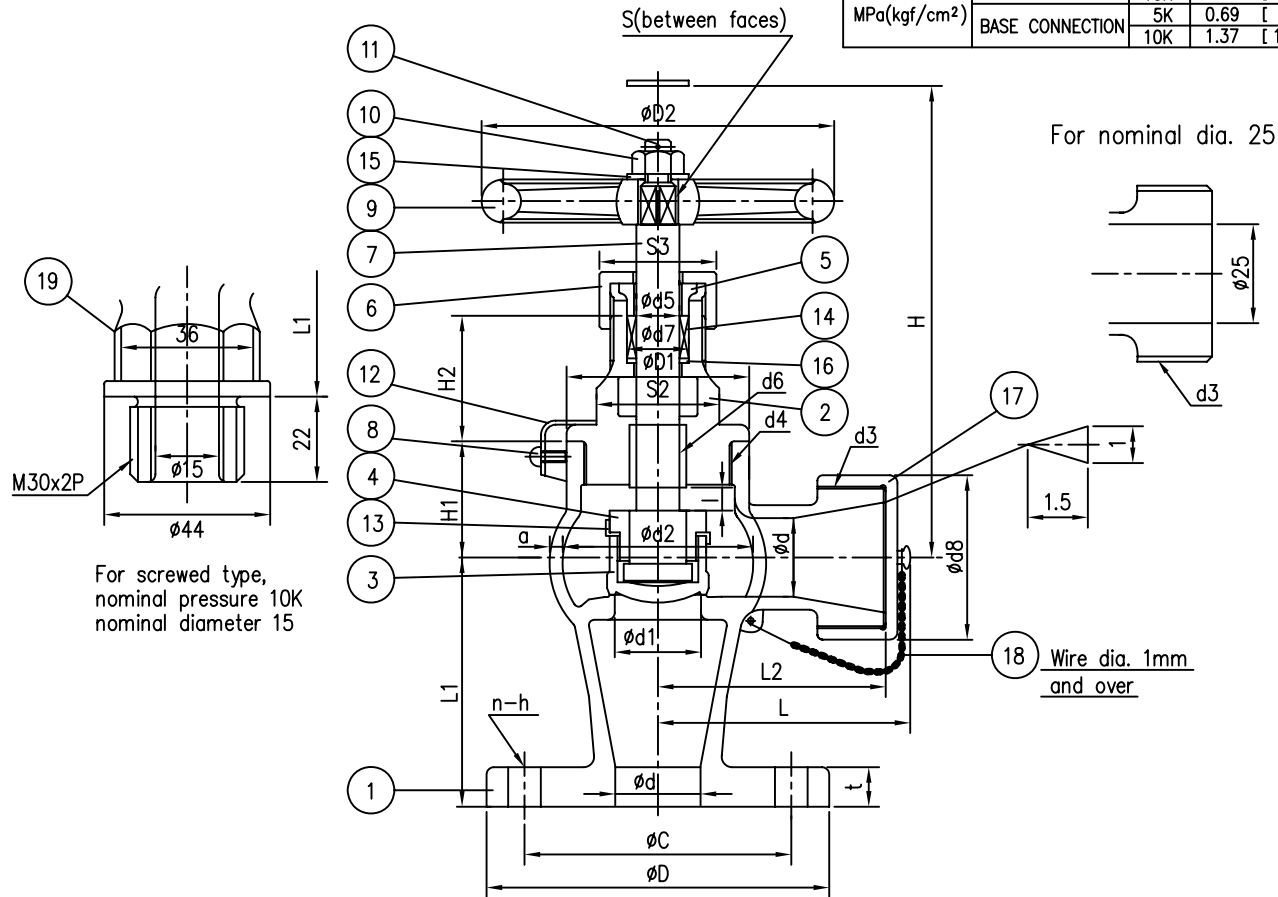
(Unit:mm)

■ HYDRAULIC INSPECTION ■

■ PRESSURE RATING ■

TEST PRESSURE MPa(kgf/cm <sup>2</sup> )	BODY	5K	1.03	[10.5]
		10K	2.06	[ 21 ]
	SEAT	5K	0.75	[ 7.7 ]
		10K	1.51	[15.4]
BASE CONNECTION	5K	0.69	[ 7 ]	
	10K	1.37	[ 14 ]	

FLUID CONDITION	MAX. WORKING PRESSURE MPa (kgf/cm <sup>2</sup> )			
	5K		10K	
	15A	25A	15A	25A
STEAM OF 205°C OR LESS	-		-	
AIR	0.49 [5]	-	0.981 [10]	-
PULSATION WATER	0.49 [5]	0.49 [5]	0.981 [10]	0.981 [10]
NON-SHOCK WATER OF 120°C OR LESS	0.69 [7]	-	1.37 [14]	-



For screwed type,  
nominal pressure 10K  
nominal diameter 15

Wire dia. 1mm  
and over

Bolt holes of flanges shall straddle body center lines.

(Unit:mm)

Nominal dia.	Nominal pressure K	Flange										Body								Bonnet			Stem			Stirring box d7	Between faces		WEIGHT (kg)	
		d	d1	L	D	Bolt holes		Nominal dia. of bolt	t	Ht.(opened) H	Lift I	Handwheel D2	Threads				d8	D1	H2	d5	Threads		S2	S3						
						P.C dia C	N						h	d2	d3	a					H1	L1			L2		d4	d6		S
15	5	15	20	68	80	60	4	12	M10	12	120	5	80	44	M42x2	3	37	55	55	M36x2	52	45	33	10	TW14	8	17	32	32	2.41
	10	15	20	73	95	70	4	15	M12	12	120	5	80	44	M42x2	4	37	70	60	M36x2	52	45	33	10	TW14	8	17	32	32	2.72
25	5	25	30	78	95	75	4	12	M10	10	145	8	125	55	M42x2	4	44	65	65	M42x2	52	52	43	13	TW18	10	21	36	36	3.44
	10	25	30	83	125	90	4	19	M16	14	145	8	125	55	M42x2	4	44	85	70	M42x2	52	52	43	13	TW18	10	21	36	36	4.04

19	BODY	BC6	1	
18	CHAIN	C2600W	1	
17	CAP	BC6	1	
16	BONNET BUSH	C3771BD	1	
15	NAME PLATE	C2801P	1	
14	PACKING	NON-ASBESTOS	1set	
13	DISC LOCK WASHER	C2600P	1	
12	BONNET LOCK PLATE	C2600P	1	
11	SPLIT PIN	C2600W	1	
10	HEXAGON NUT	C3604BD	1	
9	HANDWHEEL	FC200	1	
8	SET SCREW	C2700W	2	
7	STEM	C3771BD	1	
6	GLAND NUT	C3771BD	1	
5	PACKING GLAND	C3771BD	1	
4	DISC NUT	C3771BD	1	
3	DISC	BC6	1	
2	BONNET	BC6	1	
1	BODY	BC6	1	

NO.	NAME OF PART	MATERIAL	Q'TY	REMARK	
REV	DATE	DESCRIPTION OF REASON	DRAW'G	CHK'D	APP'D

DESCRIPTION	JIS F7334 CAST BRONZE 5,10kgf/cm <sup>2</sup> HOSE ANGLE VALVES				
DRAW'G	CHK'D	APP'D	SCALE	NON	
H.J.YUN	S.M.BAB	S.M.BAB	UNIT	(mm) inch	
DATE	06.11.16	DWG NO.	KS-BC-HA-7-A1	REV 0	

技星金屬株式會社  
KEY SUNG METAL CO., LTD.